

Legend

- Site Boundary

- National Landscape Character Area (NCA) Profiles #
 The extent lies entirely within Landscape Character Area 147: Blackdowns

- East Devon District Council Landscape Character Types/Areas ~

 - Type 1: Plateau
Area A: Open inland planned plateaus

 - Type 2: Scarp Slopes
Area A: Steep wooded scarp slopes

 - Type 3: Valley Slopes
Area A: Upper farmed and wooded valley slopes

 - Type 3: Valley Slopes
Area B: Lower rolling farmed and settled valley slopes

 - Type 3: Valley Slopes
Area C: Sparsely settled farmed valley floors

 - Main cities and towns

- Devon County Council Landscape Character Areas *

 - Blackdown Hills

 - East Devon Central Ridge

 - Clyst Lowland Farmlands

Sources:
 # OS Mapping
 # Natural England GIS Data Set
 # East Devon and Blackdown Hills District Council Landscape Character Assessment, Consultation Draft, September 2018
 * Devon County Council Landscape Characterisation September 2016, Updated March 2021
 Data collected for constraints and analysis mapping is based on publicly available sources at the time of preparation inserted using the British National Grid and may itself not be accurate. Sources shall not be liable for the accuracy of data derived from external sources.

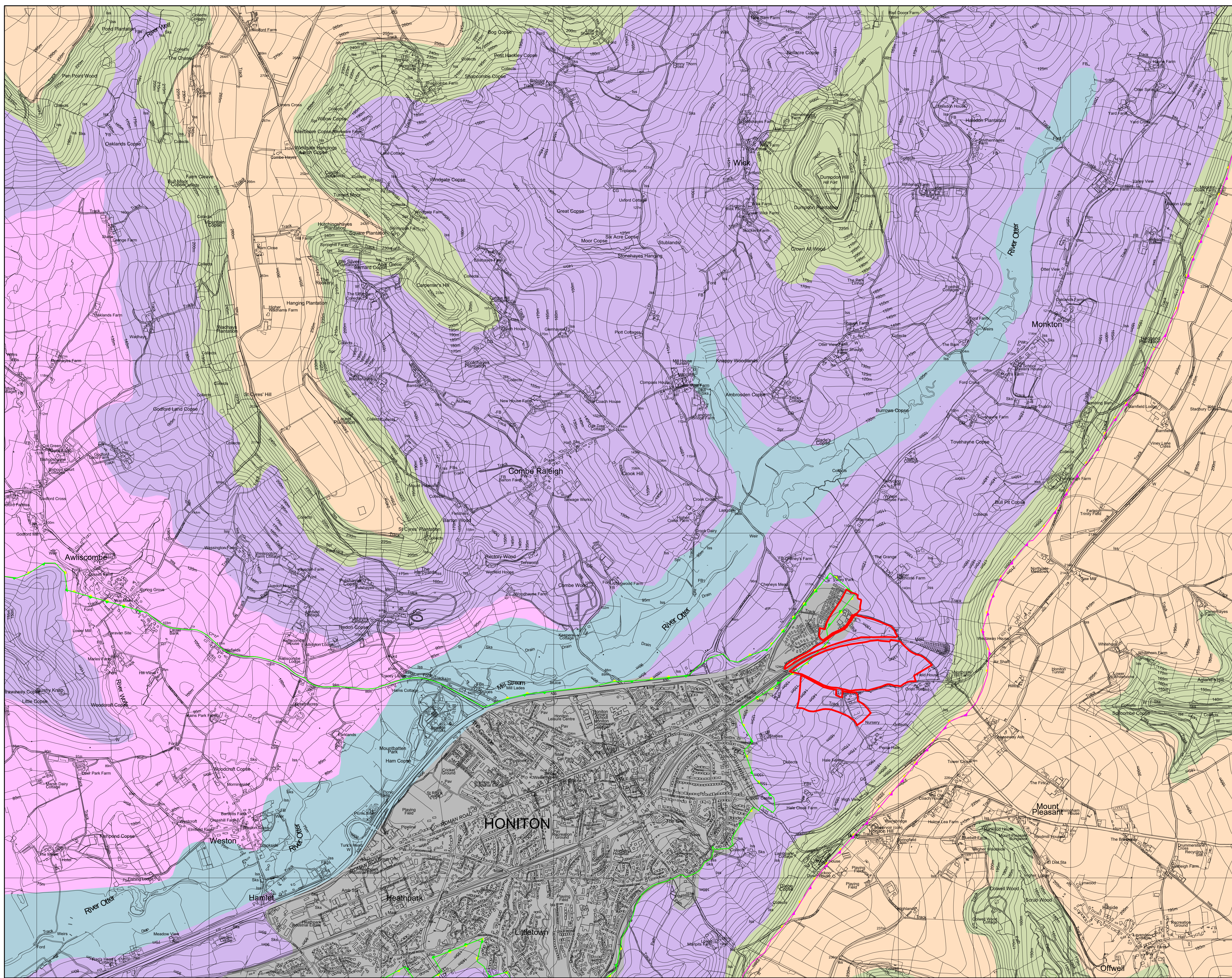


Figure 3
 Project: Land off Northcote Road, Honiton

Drawing Title: Landscape Character Plan

Date: 26.03.2025	Scale: 1:10,000 @A1 1:20,000 @A3	Drawn by: DW	Check by: SC
Project No: 333102063	Drawing No: LN-LP-03	Revision:	

stantec.com/uk