

# **Greater Exeter Strategic Transport Modelling: Greater Exeter Further Modelling Technical Note v5: Final**

## **Appendix C: Graphic output list from model**

Graphic 1: AM 2030 Flow

Graphic 2: AM 2030 VC

Graphic 3: AM 2030 vs Post SRN Actual Flow Diff

Graphic 4: AM 2030 vs Post SRN Demand Flow Diff

Graphic 5: AM 2030 vs Post SRN VC Diff

Graphic 6: AM Post SRN Flow

Graphic 7: AM Post SRN VC 2040

Graphic 8: PM 2030 Flow

Graphic 9: PM 2030 VC

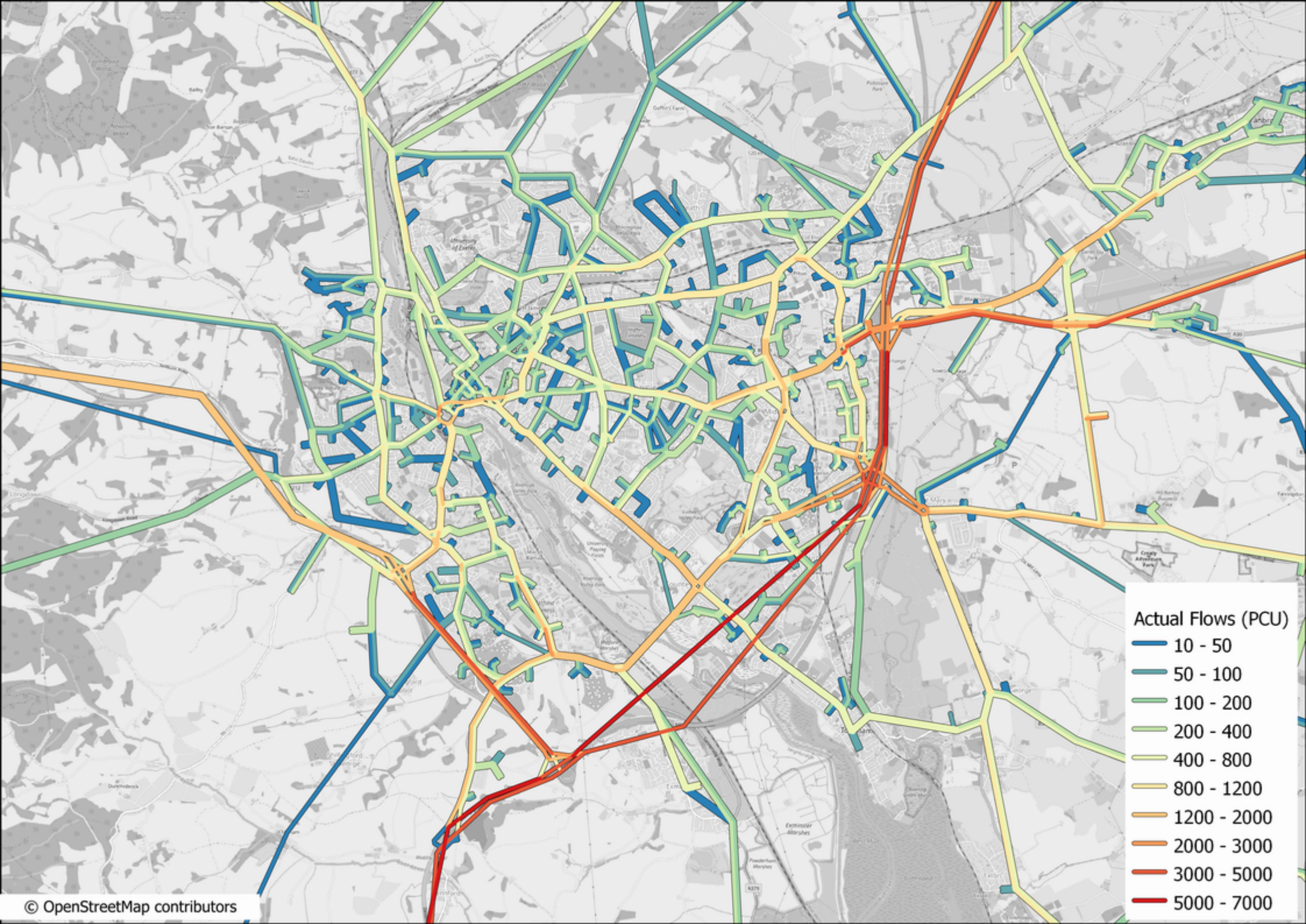
Graphic 10: PM 2030 vs Post SRN Actual Flow Diff

Graphic 11: PM 2030 vs Post SRN Demand Flow Diff

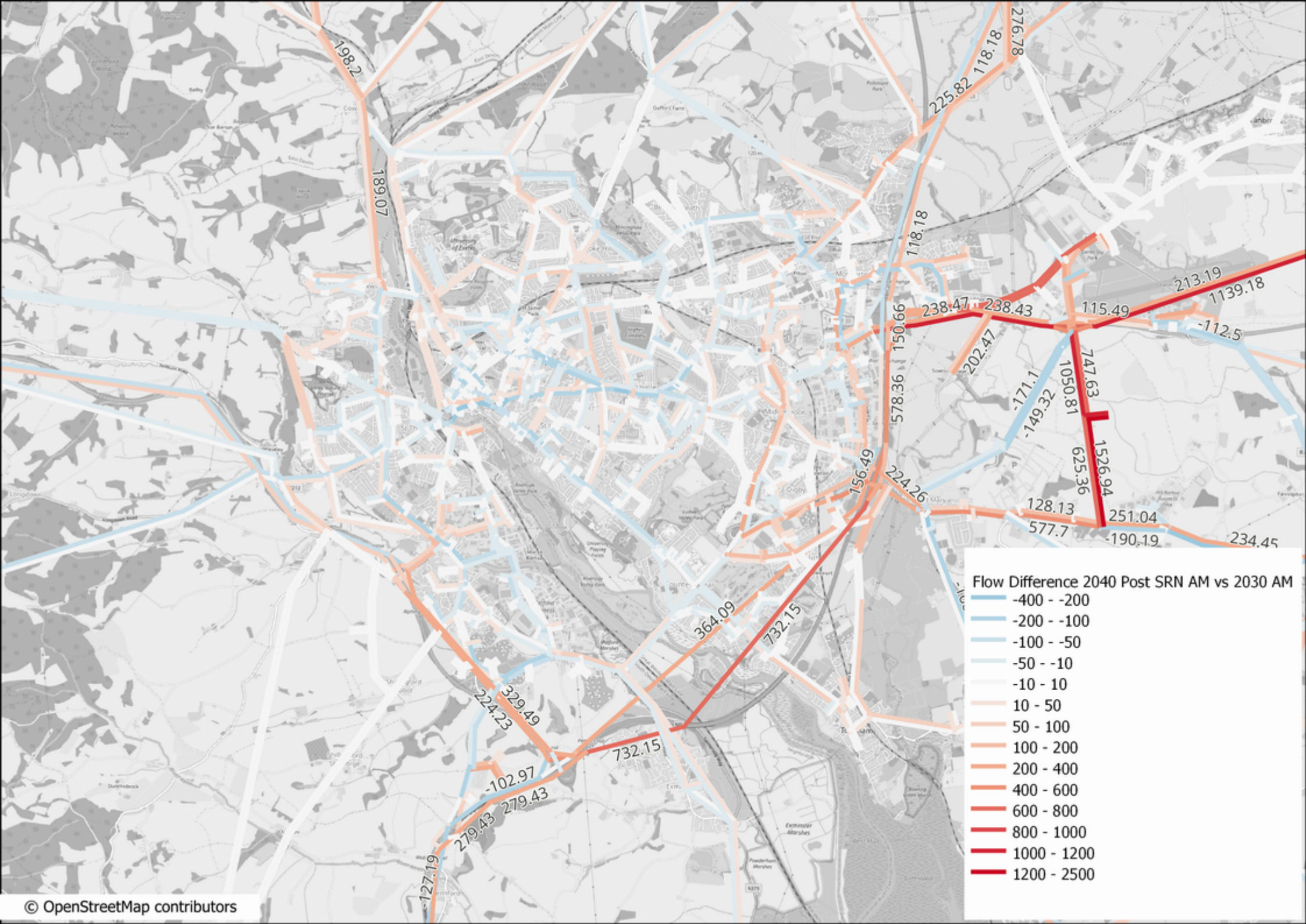
Graphic 12: PM 2030 vs Post SRN VC Diff

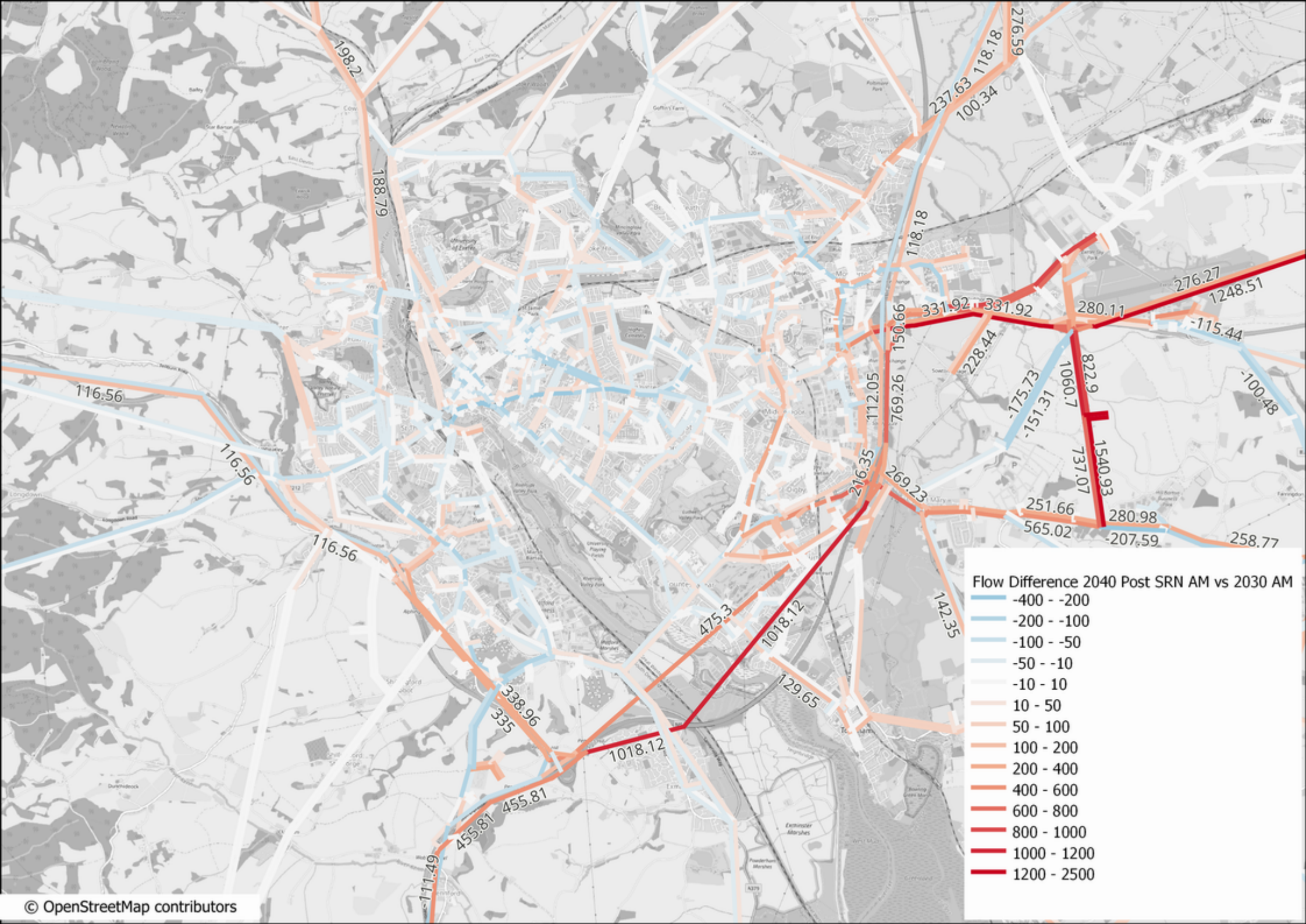
Graphic 13: PM Post SRN Flow

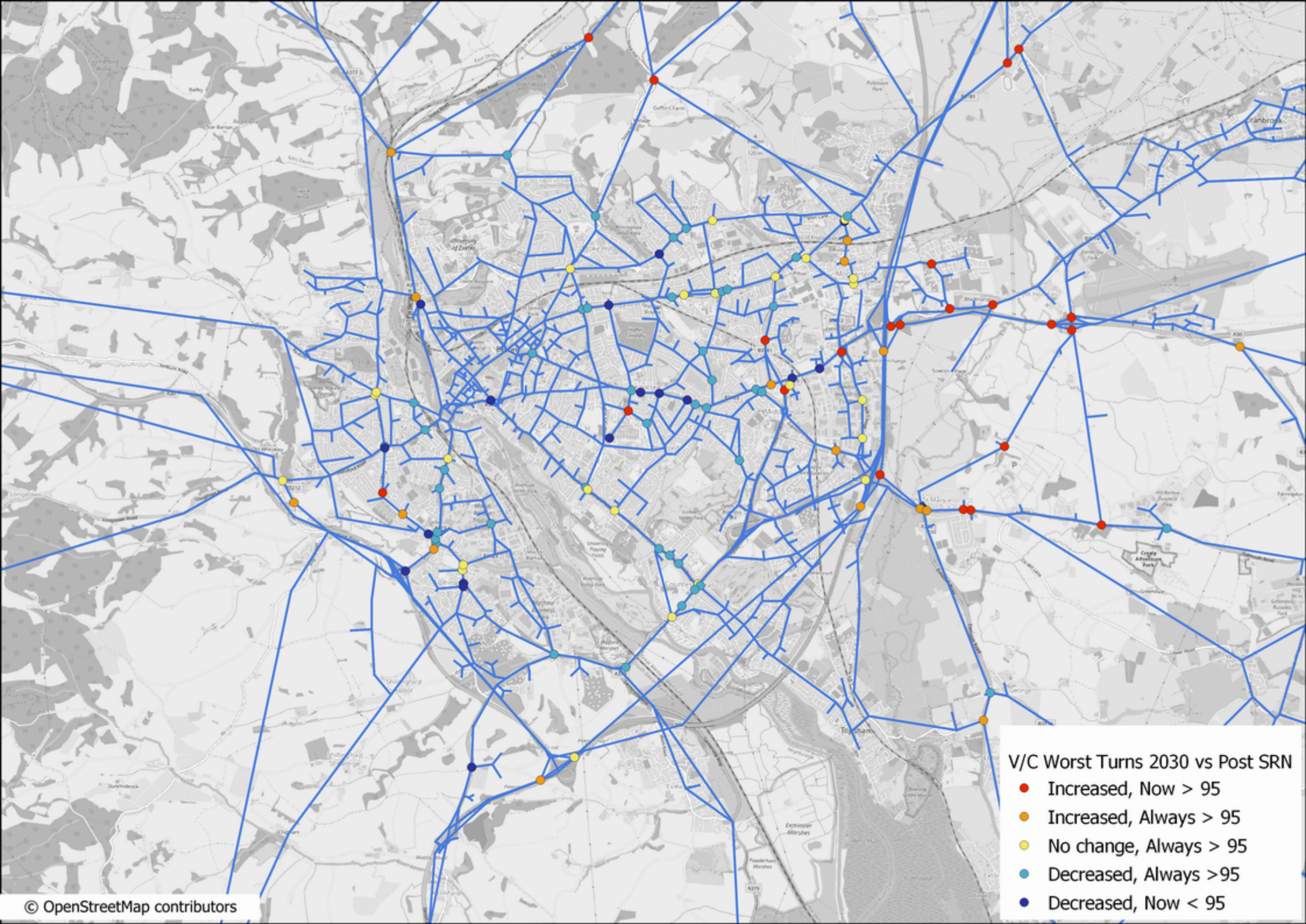
Graphic 14: PM Post SRN VC 2040





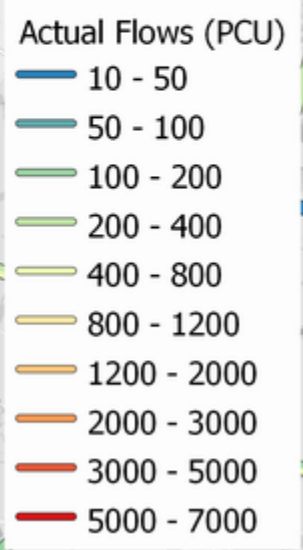
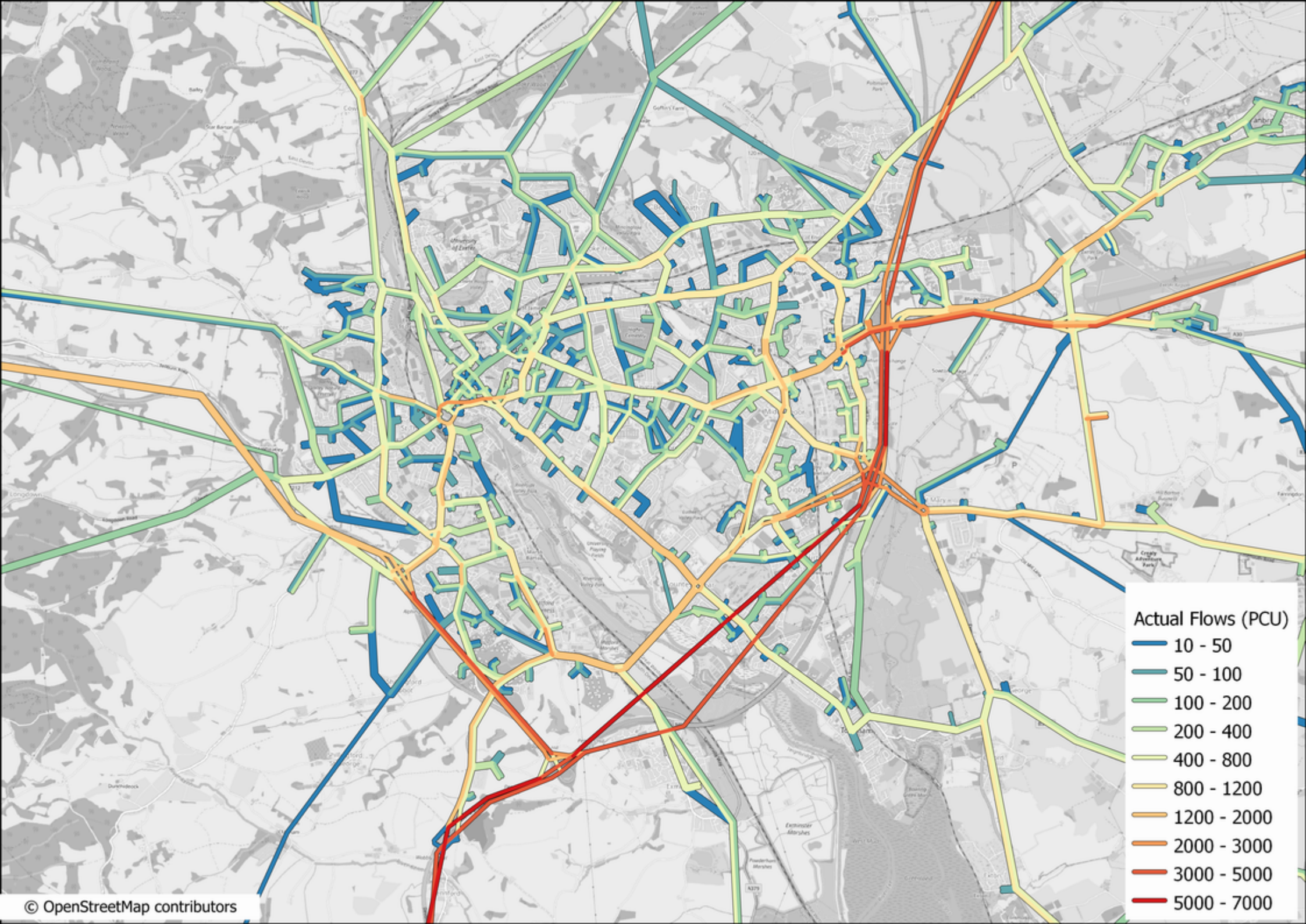


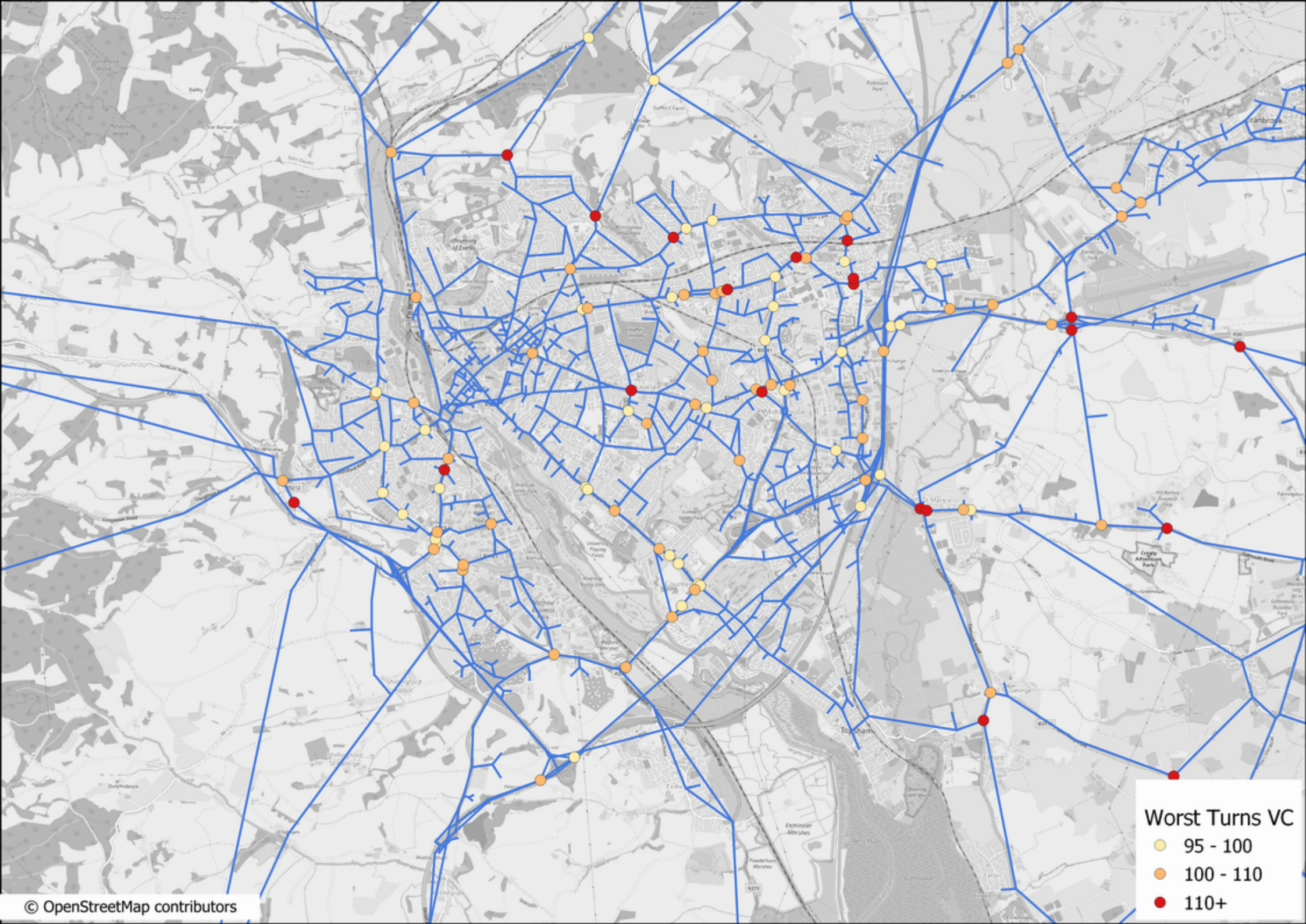




V/C Worst Turns 2030 vs Post SRN

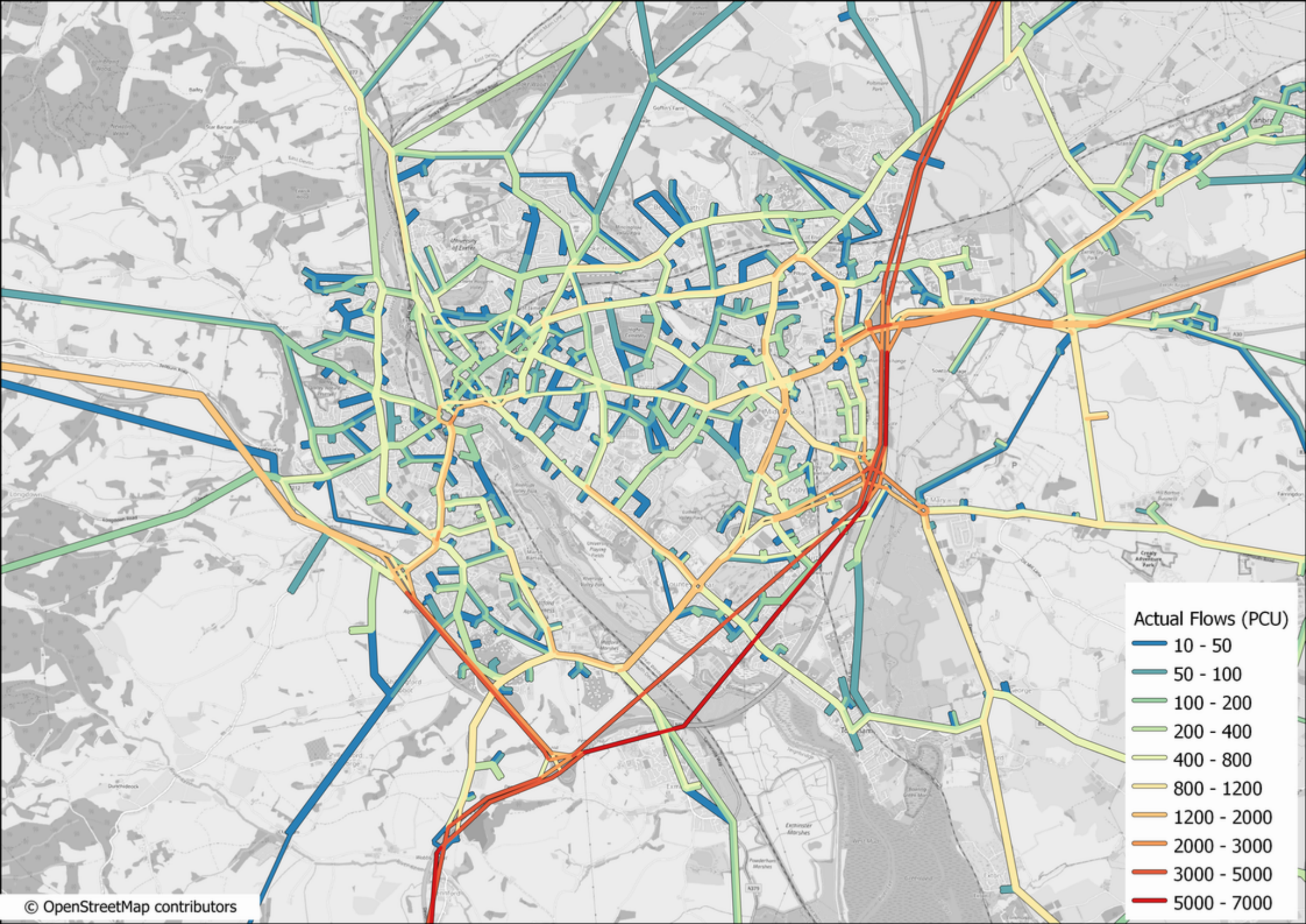
- Increased, Now > 95
- Increased, Always > 95
- No change, Always > 95
- Decreased, Always > 95
- Decreased, Now < 95





**Worst Turns VC**

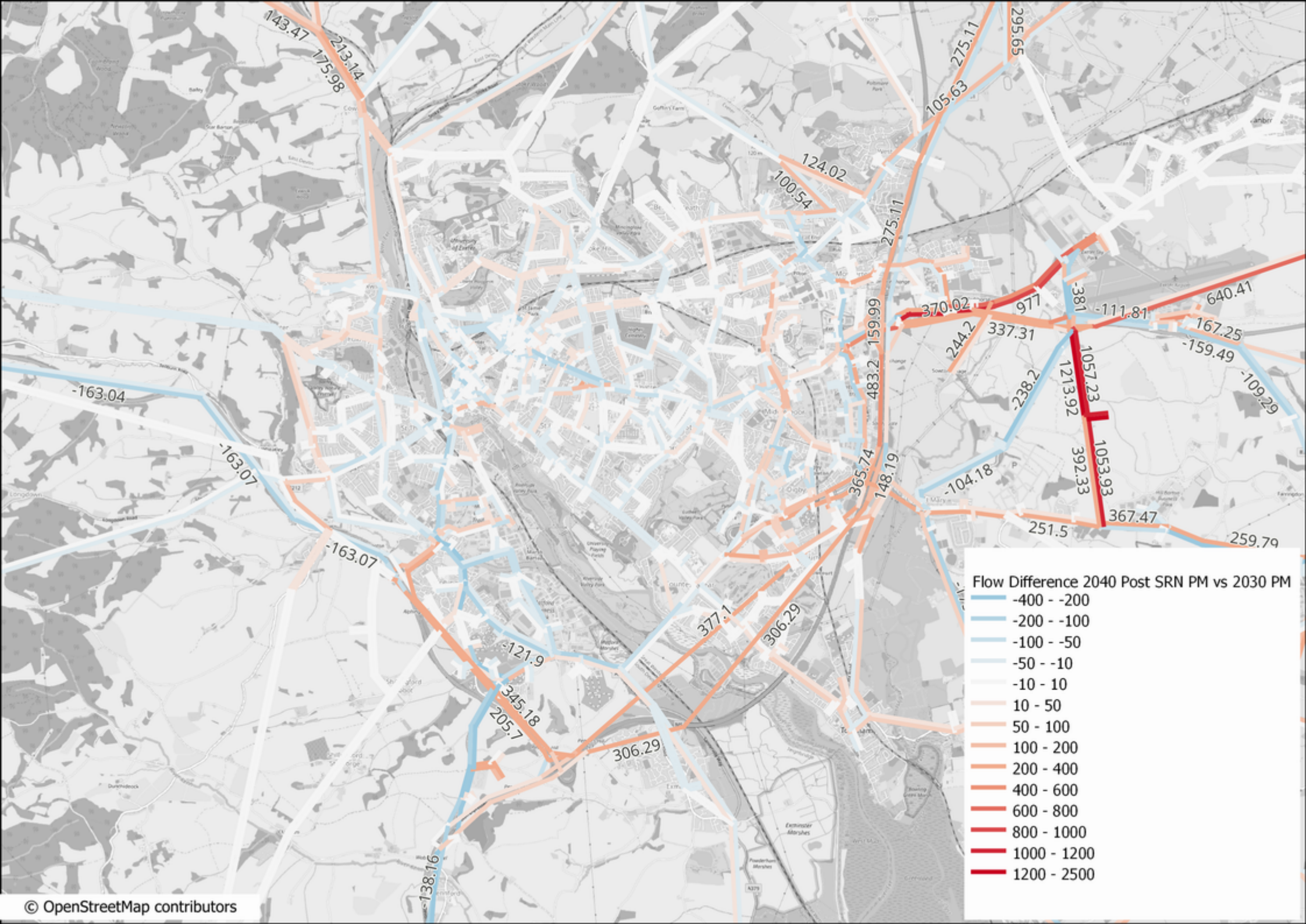
- 95 - 100
- 100 - 110
- 110+

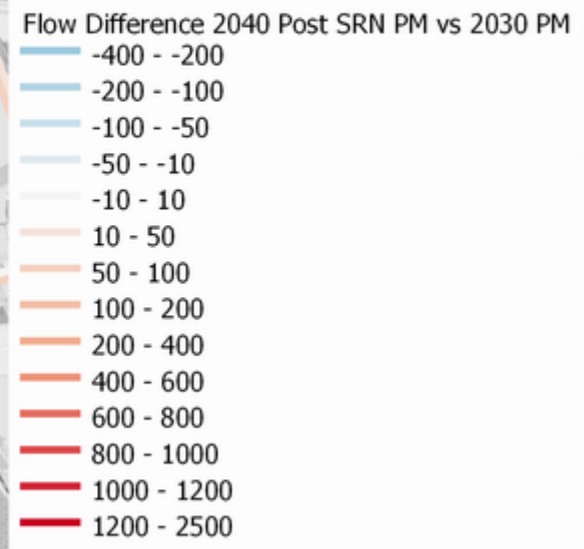
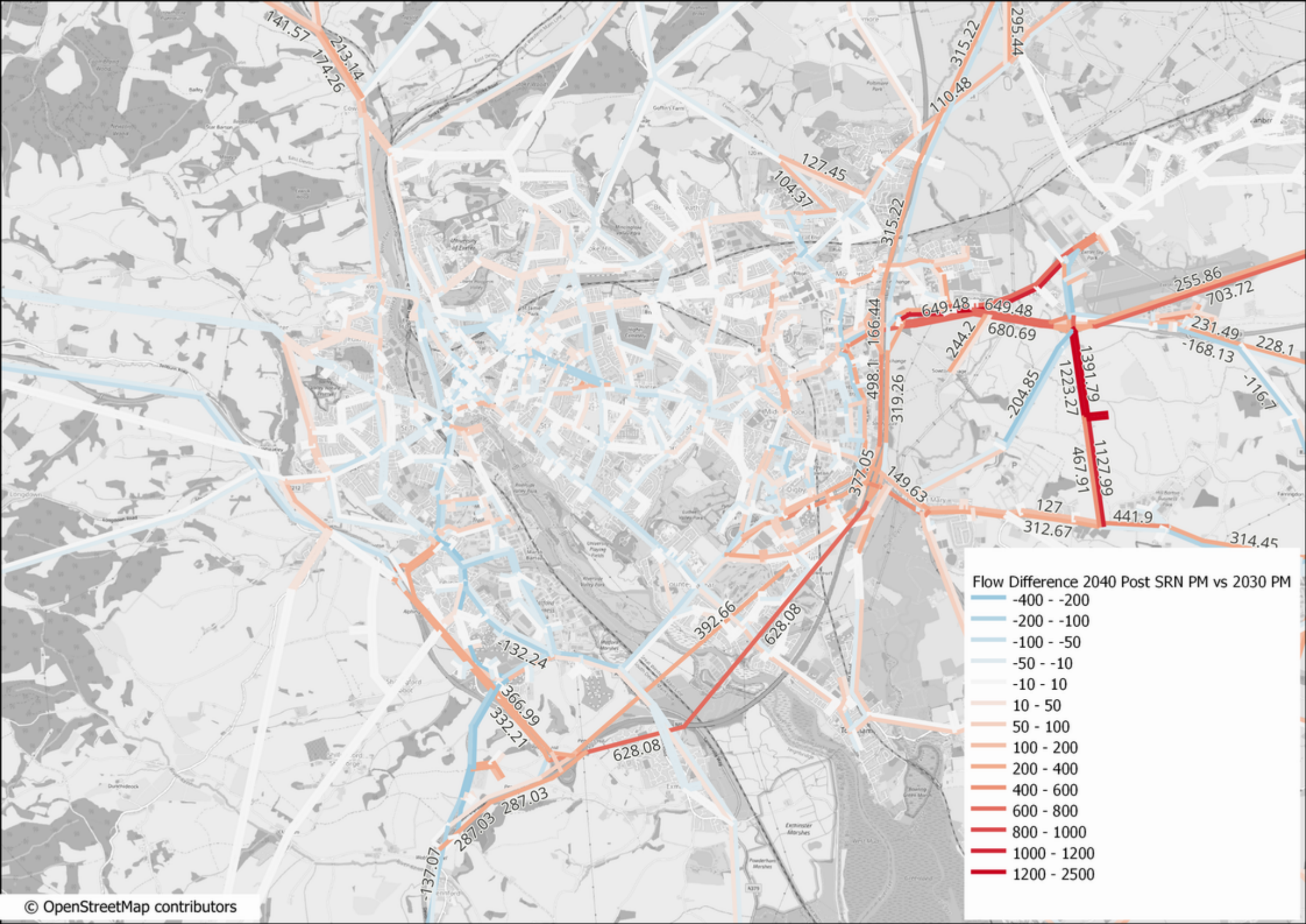


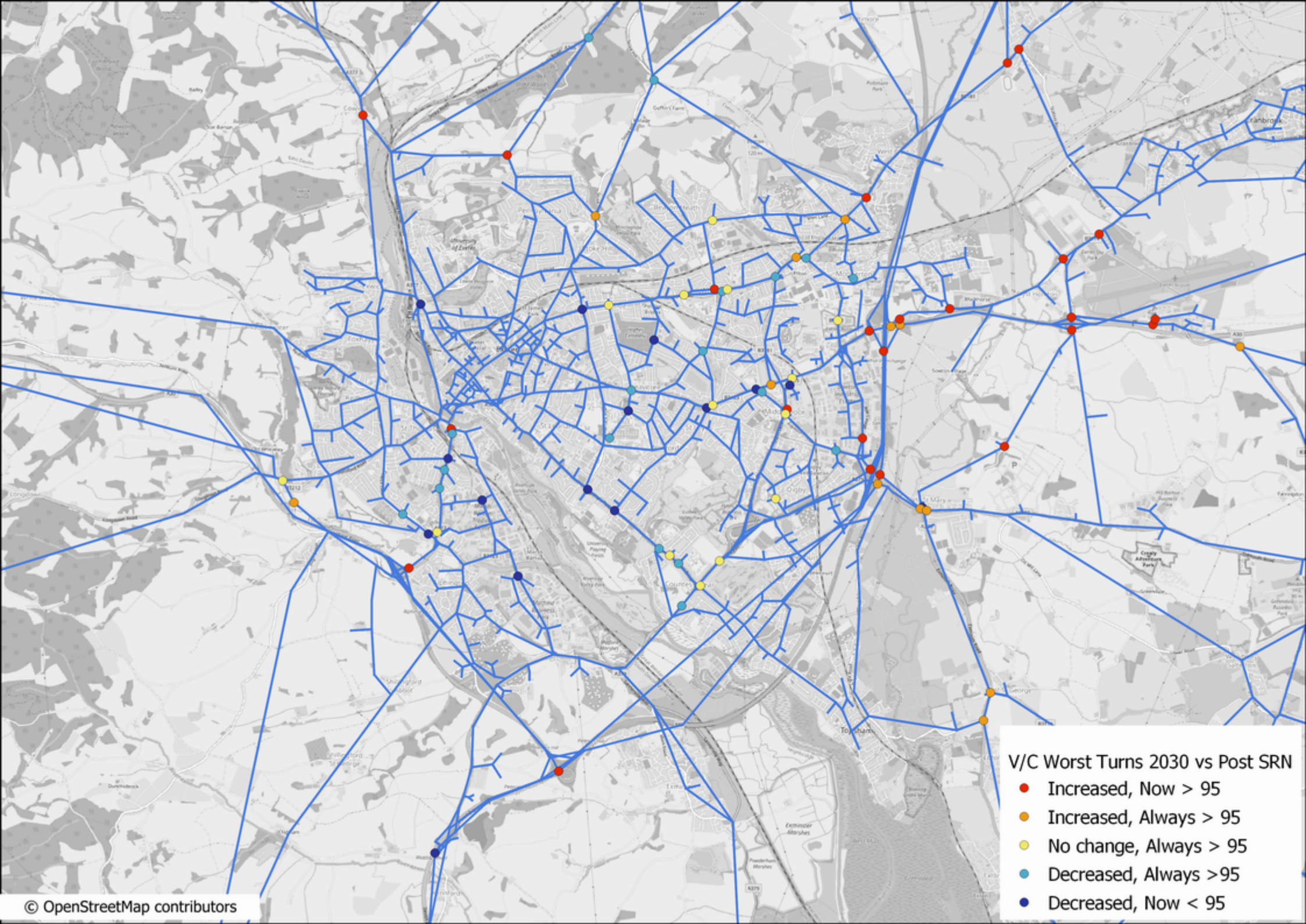


**Worst Turns VC**

- 95 - 100
- 100 - 110
- 110+







V/C Worst Turns 2030 vs Post SRN

- Increased, Now > 95
- Increased, Always > 95
- No change, Always > 95
- Decreased, Always > 95
- Decreased, Now < 95

