
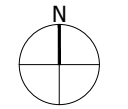


### Legend

-  Site Boundary
-  Existing Water Courses and Features ^
-  Contours/Spot Heights (Metres AOD) ^
-  Public Rights of Way \*
-  Area of Outstanding Natural Beauty #
-  Location of Photographic Viewpoints (Site Appraisal Photographs: A-H)

Sources:  
 ^ OS Mapping  
 # Natural England GIS Data Set  
 \* Devon County Council Public Rights of Way GIS Data Set

Data collated for constraints and analysis mapping is based on publicly available sources at the time of preparation inserted using the British National Grid and may itself not be accurate. Stantec shall not be liable for the accuracy of data derived from external sources.



### Figure 4

Project  
 Land off Northcote Hill  
 (Phase I and II), Honiton  
 Drawing Title  
 Site Appraisal Plan

Date	Scale	Drawn by	Check by
27.03.2025	1:3,000 @A3	DW	SC
Project No	Drawing No		Revision
333102063	LN-LP-04		-

