

This file has been cleaned of potential threats.

If you confirm that the file is coming from a trusted source, you can send the following SHA-256 hash value to your admin for the original file.

754d72ee7375ba4f876d6e93f569cc892385b0352d85896050ccce2f5e77518e

To view the reconstructed contents, please SCROLL DOWN to next page.



PestAware Advice Sheet
**Stumped
by squirrels?**

British Pest Control Association 'Stumped by squirrels?' pest awareness advice


BPCA is the trade association for the professional pest management sector. It's our role to help everyone understand the importance of proper pest control, provide pest

prevention advice, and help you find an appropriately trained and trusted pest management company. Our PestAware guides are designed for home and business owners

and are packed with practical advice and tips for getting to grips with British pest species.

Version 1. March 2020.

bpc.org.uk/pestaware
Driving excellence in pest management

 **01332 294 288**

 **@britpestcontrol**

Stumped by squirrels?

Pest advice for controlling squirrels

Have you heard something rustling in your attic or loft and suspect squirrels? As cute as squirrels might appear to be, they can be an incredibly destructive and distressing pest to have in your home or work. Learn all about grey squirrels in our ultimate pest control guide.

Pest controllers get thousands of call-outs for squirrels every year, and this is in part due to the damage they cause to your home and the noises squirrels make at night - which can be very distressing.



Grey squirrels (*Sciurus carolinensis*) are invasive pests, not native to the UK.

Whether you're thinking about doing some DIY squirrel pest control, or you're looking to get a professional pest controller to come out to you, this guide is for you.

Grey squirrels (*Sciurus carolinensis*) are invasive pests, not native to the UK.

They were first introduced to the UK from North America in the 1870's, as ornamental additions to high-class estates and country homes.

Introductions continued until the

"As cute as squirrels might appear to be, they can be an incredibly destructive and distressing pest to have in your home or work. Learn all about grey squirrels in our ultimate pest control guide."

In this guide

- The dangers: why we control grey squirrels
- Squirrel damage in your home, business and to your health
- Squirrels and forest destruction
- The native red squirrel vs invasive grey squirrels
- Tell-tale signs of squirrels
- Squirrel biology, behaviour and habitat
- What do squirrels eat?
- Treating a squirrel bite
- Preventing squirrels getting into your property
- DIY grey squirrel control
- Professional grey squirrel control
- Finding a pest controller to get rid of squirrels.

1930's, when the damage they can cause was finally acknowledged and it became illegal to release grey squirrels into the wild.

The dangers: why we control grey squirrels

Even though the grey squirrel is widely appreciated for its grace and 'cuteness' by much of the UK - the pest management industry knows that there are times when the lethal control of grey squirrels is necessary.

The grey squirrel is recognised as being in the top worst 100 invasive pest species in the world by the International Union for

Conservation of Nature (IUCN). Here in Britain and Europe, is classed as an Invasive Alien Species (IAS) which is any animal that is not native to the UK.

Because grey squirrels are an invasive pest species, it is against the law to re-release a grey squirrel if it's been caught alive, per the Wildlife and Countryside Act 1981 and Invasive Alien Species (Enforcement and Permitting) Order 2019.

That means that any person who catches a grey squirrel alive is legally obliged to humanely dispatch it. As their numbers have increased in the UK, so has the damage they cause. This is where professional pest control comes in.



It is against the law to re-release a grey squirrel if it's been caught alive, per the Wildlife and Countryside Act 1981.

There are three reasons we control grey squirrels:

- Their potential to damage to your home, business and health
- The destruction of UK forests
- The impact on our native wildlife, in particular the red squirrel.

Stumped by squirrels?

Pest advice for controlling squirrels

The dangers: why we control grey squirrels

Grey squirrels can cause damage when they enter roof spaces of houses and buildings. For example, they can:

- Gnaw on woodwork and ceilings
- Strip insulation from electrical wires
- Tear up fibreglass insulation
- Contaminate cold water tanks and attic space with urine and droppings.

People also report sleep issues due to the loud noises they make at night while they're scuttling around your attic.

Squirrels are most active before sunrise, especially in winter. Their peak activity is activity is four-five hours before daybreak. Grey squirrels often associate humans with food, meaning they sometime approach people. Some people fear being

chestnut. They strip bark at the base of trees which causes them to weaken and eventually to die. Grey squirrels also:

- Raid birds' nests to prey on eggs and fledglings (figures from the Game and Wildlife Conservation Trust suggest fledgling rates reduced by 15% due to predation by grey squirrels)
- Damage orchards and gardens, destroying bulbs and corms, eating tree nuts and recently sown seeds
- Wreak havoc on historic and ancient woodlands.

The European Squirrel Initiative (ESI) point out that around 12% of England is covered by trees and this is set to rise.

Woods and forests provide for carbon sequestration and help fight global warming. Timber also has an economic value and commercial forestry plays an important part in our rural economy.

trees left in the years to come.
The native red squirrel vs

DID YOU KNOW?

Squirrels are rodents, which means they need to gnaw to wear down their continually growing incisors.

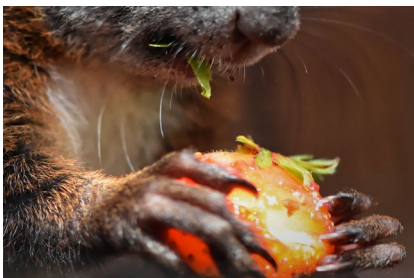
invasive grey squirrels

The grey squirrel was deliberately introduced to England, Wales, Scotland and Northern Ireland from North America in the Victorian era.

Since then, it's colonised 90% of England and Wales and is becoming a problem in Scotland.

Grey squirrels are responsible for the decline in native red squirrel (*Sciurus vulgaris*) numbers.

The Wildlife Trusts estimates there are only around 140,000 native red squirrels left in the UK, compared to 2.5 million grey squirrels.



Did you know: squirrels can be right or left-handed!

attacked, however it's very rare for a squirrel to actually attack! In gardens and allotments, they can take fruit, raid nests of small birds and dig holes in lawns to bury food.

Grey squirrels and UK forests

Grey squirrels cause damage to trees such as beech, oak and



According to the ESI grey squirrels cause £40 million damage to British forestry industry per year.

ESI are concerned unless something is done, there will be no oak, beech, or sweet chestnut mature

There have been many scientific studies which have shown that the major contributing factor for the decline of the red squirrel is the introduction of its grey cousin.

As well as outcompeting the

Stumped by squirrels?

Pest advice for controlling squirrels

red squirrel for shelter and food, grey squirrels can transmit the squirrelpox virus to red squirrels, to which they themselves are immune but red squirrels are not. Once a red squirrel has squirrelpox, it'll usually die of dehydration within 2 weeks.

DID YOU KNOW?

It is also important to understand these distinctions, as water voles and all species of shrew are protected under the Wildlife and Countryside Act 1981.

The grey squirrel can carry the disease, but their health is unaffected. Red squirrels are not only protected, but are much sought out because catching sight of them is so rare.

Unless you're around Scotland, Northern Ireland, the Forest

scientists have concluded that the rare pine marten could be a key player in curbing grey squirrel numbers.

Tell-tale signs of squirrels

Our figures suggest people have more problems with squirrels during the spring and autumn when they're looking for food.

These are the seven signs easiest signs to spot when looking for evidence of squirrels in your home or loft.

1. Scratching and rustling sound from your loft or a wall cavity
2. Spotting droppings in the loft - although you might need a pest controller to identify these droppings (check out our droppings identification guide)
3. Smell of urine in the loft area might indicate the infestation

7. Holes in vents or damage to your insulation foam.

If you've noticed a few of these signs, then it might be time to find a pest control company.

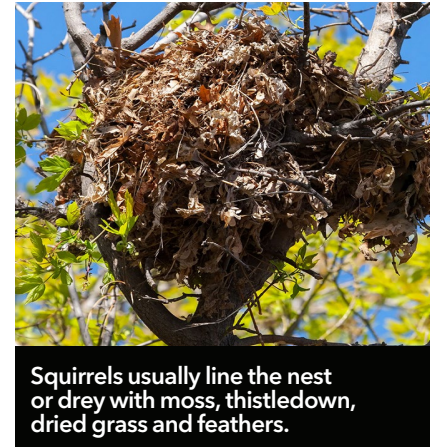
Grey squirrel biology, behaviour and habitat

Appearance

Grey squirrels have a silver-grey (sometimes slightly brown) coat with a white underside and a brownish face.

Squirrels moult their coat twice a year - once after winter and then in the late summer before the weather gets colder again.

They average between 24-26cm in length, with a very bushy tail almost the same length of the body. They have a pointed nose with long whiskers, big eyes and small ears.



of Dean or the Isle of Wight, there's a good chance you've never seen a red squirrel.

In an interesting study titled 'The enemy of my enemy is my friend: native pine marten recovery reverses the decline of the red squirrel by suppressing grey squirrel populations',

4. Spotting lots of other squirrels around your property, particularly near your roof or on high fences
5. Fruit and nuts being stolen from bird feeders, or the feeders being disturbed/knocked over
6. Bark being stripped from trees in your garden

Their hind legs are longer and more powerful than the front, and all paws have very sharp claws which the squirrel uses for climbing.

Habitat

The drey is a very messy looking, spherical nest which may be found in a hole in a tree or set against the trunk and branches.

Stumped by squirrels?

Pest advice for controlling squirrels



Squirrels can hang upside down like bats and are pretty good swimmers

Behaviour

Active during the day, squirrels spend most of their time in the trees, coming down to the ground to search for food.

They are superb climbers, moving rapidly through the trees and leaping between them with ease.

It is one of the few mammals which can climb head first down a tree.

Grey squirrels do not hibernate, so may be seen at all times of the year.

However, in winter they are far less active, sleeping for long periods, sometimes several days at a time, and they are less frequently spotted during this season.

Squirrels are not territorial, often sharing food sources and home ranges.

These are easier to see in winter, when there are fewer leaves on the trees. Alternatively they can make themselves quite at home in an attic or roof space.

The grey squirrel can be found in a wide range of outdoor habitats, including mixed woodland, deciduous woodland, suburban parks and domestic gardens.

Reproduction

They usually have two litters a year, in early spring and summer. Grey squirrels typically have

three to seven kittens.

Pregnancy (gestation) lasts roughly 44 days, with the young weaned at seven weeks and ready to leave the fry at 10 weeks old.

Kittens are born with closed eyes, no teeth and no hair. After about seven weeks they look like small versions of their parents and are ready to leave the drey.

Female squirrels can live up to five years, with male squirrels averaging around two-three years.

What do grey squirrels eat?

Grey squirrels are almost exclusively herbivorous.

They eat acorns, hazel nuts, sweet chestnuts, pine nuts, walnuts, berries, fungi, grains, vegetables, buds and shoots, bark and peanuts from bird feeders.

However, if plant food is scarce they will eat insects like caterpillars or crickets, smaller rodents, bird eggs and nestlings.

Squirrels will hoard nuts and seeds in preparation for winter, gathering them and burying them in caches all over.

In spite of their amazing memory, a large number of caches remain uneaten. This helps the seeds and nuts to spread, and allows them to grow.

Treating a squirrel bite

Grey squirrels often associate humans with food, meaning they sometimes approach people. Some people fear being attacked, however it's very rare for a squirrel to actually attack!

In the rare event you are bitten by a squirrel, you should immediately wash the wound as thoroughly as possible; squirrel bites can be deep, but it's important to do this even if the skin hasn't been broken.



Did you know: squirrels have incredible spatial memory and acute sense of smell, which helps them find food caches weeks or months after burying them.

Once the area is cleaned, treat it with antiseptic cream and seek medical advice.

Preventing squirrels getting into your property or damaging your trees

Prevention is always better than cure.

Habitat management like as cutting back trees or branches that are overhanging a building, or trimming dense ivy can help prevent squirrels gaining access to a roof in the first place.

Next consider proofing entry points to your roof. For example, block the gaps and entrances holes with tightly wedged mesh or metal plates, wherever possible. A pest control professional should be able to help you with this.

Squirrels are fairly strong for their size and also persistent. If the proofing is not secure then the squirrels may be able to pull it out!

Stumped by squirrels?

Pest advice for controlling squirrels

For tree protection, close fitting metal sleeves can protect them from the strong rodent incisors.

This should be at least 0.75m deep, and the bottom edge should be at least 1.5m from the ground. The metal should be a smooth surface to assist in preventing the squirrel from gaining a foothold.

DID YOU KNOW?

Grey squirrels are almost exclusively herbivorous but will eat insects, smaller rodents, bird eggs and nestlings in a pinch.

DIY grey squirrel control

Although you can potentially do a lot of the proofing work to stop squirrels entering your property, DIY squirrel control is unlikely to be effective - and could potentially be very dangerous and illegal, as you must know the legislation around the control of squirrels.

Traps are available online, however not every rodent trap is authorised to control squirrels. Traps should never be used without adequate training.

Any squirrel you caught alive would have to be killed, as per the Wildlife and Countryside Act 1981 (Spring trap approval order).

Any squirrel that you kill would have to be done humanely and this can be very distressing. Some amateur attempts at squirrel control have resulted in people drowning the rodent which is against the law and can result in prosecution.

There are no amateur use products for poisoning squirrels available to the public. Pest professionals do have access to legally authorised

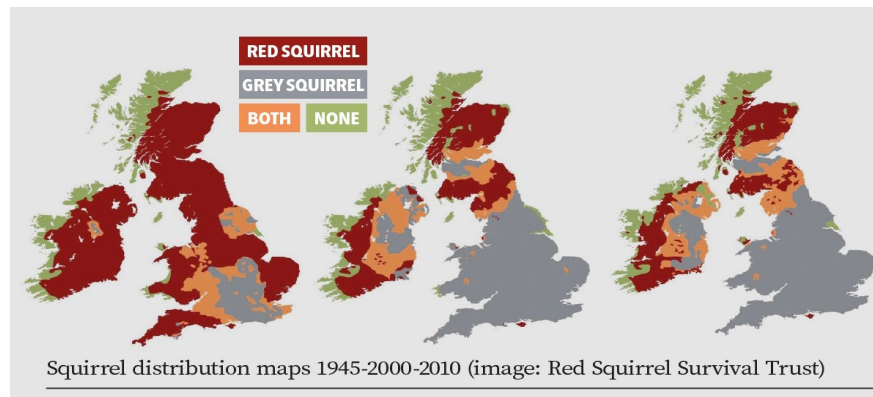
grey squirrel poisons (Warfarin only) that are only for use inside buildings.

Things you can do:

- Trim tree branches that overhang your roof
- Rove anything stacked up against the side of your building
- Seal all entry points (proofing).

For example, it is an offence to use or permit the use of a spring trap, other than an approved spring trap, for the purpose of killing or taking animals, as per the Spring Traps Approval Order.

Live capture trapping is what it sounds like - capturing an animal live. This may be used where it would be



Professional grey squirrel control

It's important with squirrels (as with all pest species) that a pest professional assesses whether lethal control is necessary.

In the first instance, proofing such as the guidance in the previous section should be put into place. If this is unsuccessful calling a professional should be your next action.

To control squirrels, professionals might use:

- Spring traps
- Live capture traps
- Use of poison (Warfarin only)
- Drey poking
- Other shooting methods.

It's important to know the law surrounding control of any pest species, which is where a pest management professional comes in.

impractical or against best practice to use another control method, for example where placing rodenticide would put non-target species at risk.

There are several reasons why this should only be done by a qualified pest technician.

- Live capture trapping needs to be humane, legal and carried out with sensitivity. It is an offence to cause unnecessary suffering to any animal as stated in the Wild Mammals (Protection) Act 1996
- Traps need to be inspected regularly and must contain a food source, water source and be suitably sheltered from extremes of weather as per the Animal Welfare Act 2006
- Non-target species should be released unharmed, which means you must be able to correctly identify the animal that has been caught

Stumped by squirrels?

Pest advice for controlling squirrels

- Target species need to be dispatched humanely by a competent person.

You also cannot use live capture traps to remove a grey squirrel from your property in order to release it elsewhere. As an invasive species, it is against the law to release a grey squirrel once caught.

Use of poisons (Warfarin only) - these are only to be used by pest professionals and can only be used inside buildings. The poison is laid in strategic locations, usually in multiple feeding trays and then checked at regular intervals to assess if it has been successful.

It is important to be aware that these poisons can take a few days to work and, in this time, the squirrel may die out of reach. This can cause a bad smell!

Drey poking is especially effective in winter, when all the leaves are gone from the trees and the nests can be seen more clearly. It involves a team of people clearing the squirrels from an area by disturbing the dreys and dispatching the emerging squirrels using an air rifle.

Other shooting methods may be employed, for example to clear a population residing in your attic before proofing works commence.

Anyone using air rifles and firearms must have the appropriate skills, experience and training to safely carry out control using these devices.

Finding a pest controller to get rid of squirrels

A BPCA member company

will be able to treat infestations quickly and safely.

They can help minimise pest activity with a range of techniques and have the technical knowledge and experience to apply products in an efficient manner, while minimising risk to the environment and non target species.

BPCA members all have:

- The correct insurances
- Trained and qualified technicians
- Been audited to the British Standard in pest management EN 16636
- To follow BPCA's Codes of Best Practice.

BE PROTECTED. PROFESSIONALLY.
How do you know your pest management contractor is fit for the fight?

BPCA
 British Pest Control Association
 MEMBER

British Pest Control Association is the trade association for professional pest management companies in the UK.

By choosing an audited BPCA member you can be assured that the services you receive are from a trained and trusted company that meets our strict membership criteria.

Our member companies meet or exceed all legal and 'due diligence' requirements and comply with the most current legislation.

No other trade body gives you this security.

Make sure you stay safe.

Select a BPCA member.

Stay protected. Always look for the logo.

BPCA
 British Pest Control Association
 MEMBER

Find a pest controller

A BPCA member company will be able to treat infestations quickly and safely.

They can help minimise pest activity with a range of techniques and have the technical knowledge and experience to apply products in an efficient manner, while minimising risk to the environment and non target species.

You can find a BPCA member, local to you, using our Find a pest controller tool.

bpca.org.uk/find
 01332 294 288