

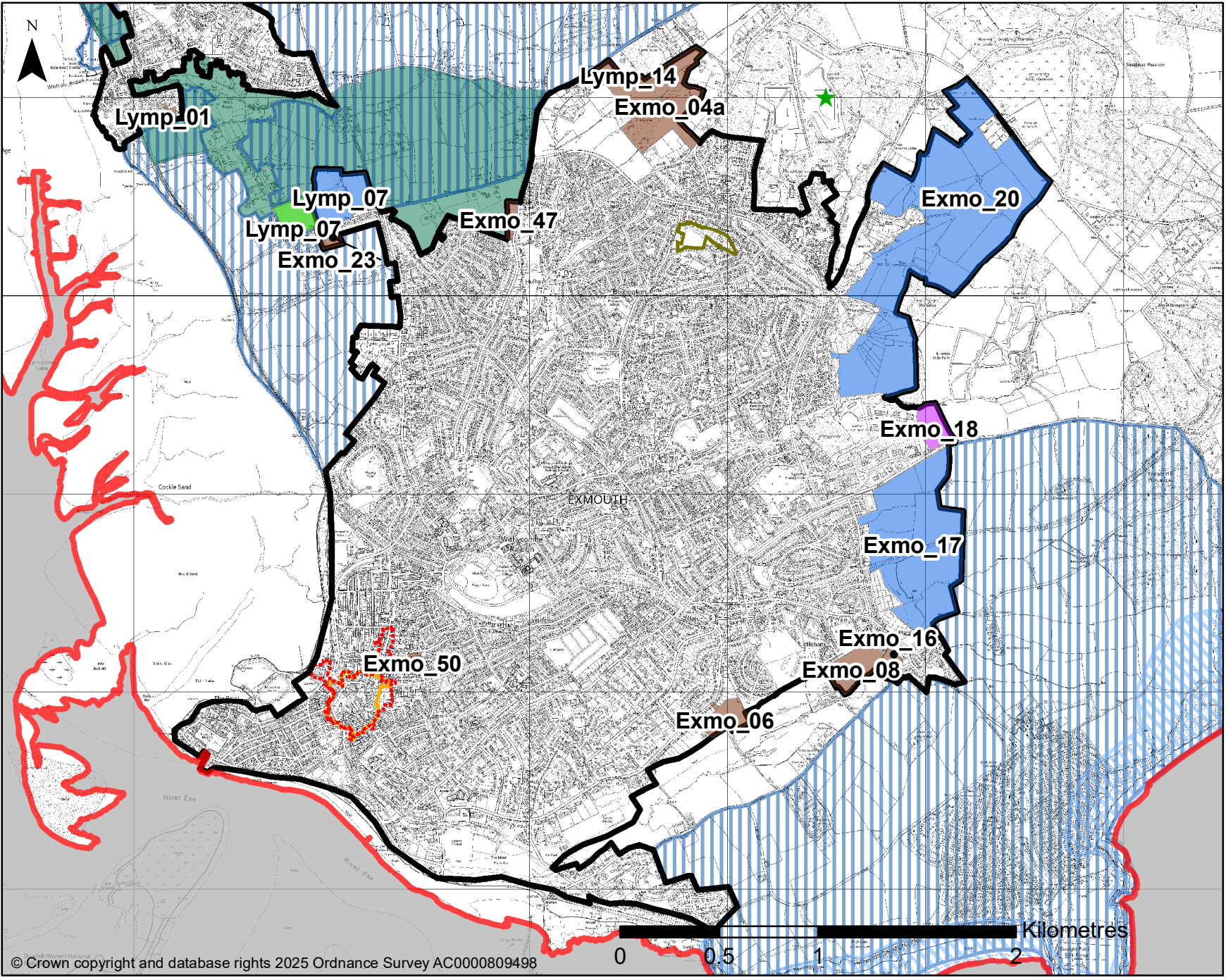
n.b. This inset map has been provided as an additional resource; the definitive version of the Policies Map is the interactive version which can be accessed here: <https://maps.strata.solutions/portal/apps/webappviewer/index.html?appid=8da794a146d94df680ee37c7589e9a1e>

**Legend (key policy boundaries shown only)**

**Site Allocations (SD01)**

**Type**

- Housing
- Housing and Employment
- Employment
- Open Area
- Settlement Boundaries (SP05)
- Areas considered suitable for Wind Energy (CC03)
- Coastal Change Management Areas (AR03)
- Town Centre Areas (SE07)
- Primary Shopping Areas (SE07)
- Coastal Preservation Areas (OL03)
- Green Wedges (OL05)
- Land of Local Amenity Importance (OL06)
- OUTSIDE EDDC BOUNDARY



**East Devon Local Plan 2020-2042 (Reg 19 Consultation)**  
**inset to Policies Map**

