

This file has been cleaned of potential threats.

If you confirm that the file is coming from a trusted source, you can send the following SHA-256 hash value to your admin for the original file.

e301cf0e21e28f6fd79256284e967ae811fc613bde5e2c41507f3521226a8254

To view the reconstructed contents, please SCROLL DOWN to next page.



BPCA

British Pest
Control
Association



PestAware Advice Sheet

Worried about wasps?

British Pest Control Association 'Worried about wasps?' pest awareness advice

BPCA is the trade association for the professional pest management sector. It's our role to help everyone understand the importance of proper pest control, provide pest

prevention advice, and help you find an appropriately trained and trusted pest management company. Our PestAware guides are designed for home and business owners

and are packed with practical advice and tips for getting to grips with British pest species.

Version 1, July 2019.

bPCA.org.uk/pestaware
Driving excellence in pest management

 01332 294 288

 @britpestcontrol

Worried about wasps?

Pest advice for controlling Wasps

Are you worried about wasp stings? Have you found a wasps' nest? Learn all about wasp nest treatments in our ultimate wasp pest control guide. Get rid of wasps for good.

If you've spotted lots of wasps and you're worried about getting stung, we've put together a guide all about Britain's most annoying BBQ guest.

Pest controllers get thousands of call-outs to treat for wasps every year - so if you're having wasp issues, you're not alone! Whether you're thinking about doing some DIY wasp pest control, or you're looking to **enlist the help of a professional pest management company**, this guide's for you.



Wasps make up an enormously diverse array of insects, with some 30,000 identified species.

Queen wasps emerge and start working on new nests in the Spring, as the weather gets warmer. By the Summer months, wasp nests are working overtime, with up to 300 eggs being produced every day and up to 5,000 adults feeding grubs and building the nest structure.

In the UK you're most likely to come across (*Vespula vulgaris*) and German Wasps (*Vespula germanica*).

"The problem is a social wasp in distress emits a pheromone that sends nearby colony members into a defensive, stinging frenzy. Scare a wasp and it might call for backup."

Both species are yellow and black striped, and have painful stings that can cause allergic reactions.

In this guide

- The dangers: why we control wasps
- Treating wasp stings
- Wasps around your business
- Signs of a wasp nest
- Wasp biology and behaviour
- The differences between wasps and bees
- Preventing wasps and their nests
- Getting rid of wasps and their nests
- Finding a pest controller to get rid of wasps.

The dangers: why we control wasps

One of Britain's most feared and potentially aggressive pests, wasps are known for their nasty stings and seemingly unprovoked attacks.

In reality, wasps will usually only attack a person if they feel threatened. The problem is a social wasp in distress emits a pheromone that sends nearby colony members into a defensive, stinging frenzy.

That's right - scare a wasp and it might call for backup. Wasp stings are at best painful, and at worst fatal.

If you're sensitive to wasp stings then they can send you into **anaphylaxis** - a severe, potentially life-threatening allergic reaction. Children, elderly people, those with

allergies, and household pets are particularly sensitive to wasp stings.

"Anaphylaxis is a medical emergency. It can be very serious if not treated quickly. If someone has symptoms of anaphylaxis, you should call 999 for an ambulance immediately."
NHS, A-Z of health

If you're worried about a large amount of wasp activity around your home and family, you should **find a professional pest controller in your area**.

Treating wasp stings

If after a sting you have difficulties breathing, dizziness or a swollen face - you need to seek immediate medical treatment. If you've not had a severe allergic reaction, your sting will still be very painful. To treat a sting yourself:



The sting of a wasp on a human hand. Note the swelling and redness.

1. Wash around the sting with soap and water
2. Apply a cold compress, like an ice pack, for at least 10 minutes
3. Elevate the affected area, if possible.

Worried about wasps? Pest advice for controlling Wasps

4. Avoid scratching and don't try any daft home remedies. Vinegar and bicarbonate of soda is probably going to make it worse.

Go to your pharmacist and ask for some creams for itching and some **antihistamines**.

Wasps around your business

If you own a shop or restaurant you need to take wasp pest control seriously. If your customers experience a high level of wasp activity then they're likely to complain and request a refund or leave a negative review. Either could result in a loss of future income.

You have a duty to protect your customers and staff. To minimise the disruption to your business, we suggest you contact a professional pest controller.



Wasps in your premise can be more than a nuisance.

Should all wasps' nests be treated?

No. Wasps should only be treated if they pose a risk to public health and safety.

Wasps can be beneficial in gardens as they feed their grubs on caterpillars and other insects, thereby reducing these pest populations.

Natalie Bungay, BPCA's Technical Officer, said:

"Where possible it is worth leaving wasp nests to continue their valuable activities. However, there can come a time when the presence of wasps is detrimental to public health".



colonies of the same species.

Wasps are likely to make their nests in sheltered spots. You're likely to find wasps' nests:

- Under trees
- In bushes
- In wall cavities
- Under eaves
- In your shed or garage.

Signs of wasp nests

If you're seeing a large number of wasps in and around your home or work, there's probably a wasps' nest or a substantial attractant nearby.

Wasp nests' come in many different shapes and sizes. They're amazing pieces of architecture that can contain up to 5,000 wasps during peak activity in late Summer.

They build their nest using chewed wood and saliva to make a papier mache material. The nest material is durable, lightweight and surprisingly waterproof. Hundreds of wasps produce this papery material to build out their nest.

Every wasps' nest is both unique and shares characteristics with other

This is by no means an exhaustive list. Pest controllers have reported finding nests in everything from **toilet cisterns to brass instruments**.

To work out where your wasps' nest is, you can carefully follow worker wasps (females) back to their nest.

In early Spring, you might encounter a wasps' nest the size of a golf ball. This would suggest it contains only the solitary queen wasp and maybe a few workers.

As the Summer goes on, a wasps' nest can contain thousands of wasps and easily get to the size of a beachball, if left to grow.

The **largest wasps' nest ever recorded** was in New Zealand and measured 3.7 m long and was

Worried about wasps? Pest advice for controlling Wasps

probably made by German wasps (an impressive feat of German engineering if ever we heard one).

The earlier you treat a wasps' nest, the less aggressive the colony is going to be. You can **contact a pest controller in your area** to get them to remove a troublesome nest.

Wasps are often confused with hornets. **Hornets** are rare in the UK, but if you do see one, it's likely to be the **European hornet**.

Wasp biology and behaviour

COMMON WASP (VESPULA VULGARIS)

Lifespan	Worker 12-22 days Queen 12 months
Weight	0.084g ± 0.019g
Length	Worker 12-17mm Queen 20mm
Colony size	3,000-8,000 larvae



Wasps are classified under the order Hymenoptera, which means "membraneous wings". All the stinging insects belong to this group, and they are a highly evolved group of insects.

In the UK, we mainly get common wasps (*Vespula vulgaris*) and German wasps (*Vespula germanica*). All wasps have complex social structures and different ways of doing things.

Appearance

Both common and German wasps are large, conspicuous buzzing insects with yellow and black striped, wasp-waisted bodies.

They have a sweet-tooth at one end and a painful sting at the other!

Characteristics of wasps

The queen wasp is larger than normal wasps (about 20mm).

She hibernates over winter, making a nest in the spring in which to lay her eggs. She feeds the grubs on insects until they develop into worker wasps, three to four weeks later.

Workers, all sterile females, forage for over a mile in search of food.

At the end of the year when the colder air arrives, and fruit starts to perish quickly, wasps start to starve or die of the cold.

The adult worker wasps start to die off, and the new queen wasps go into hibernation and emerge in the spring to initiate the process again, building completely brand new nests.

One nest may produce 3,000-8,000 wasps in a year.

What wasps eat

Wasps are natural pest controllers and tend to eat other insects.

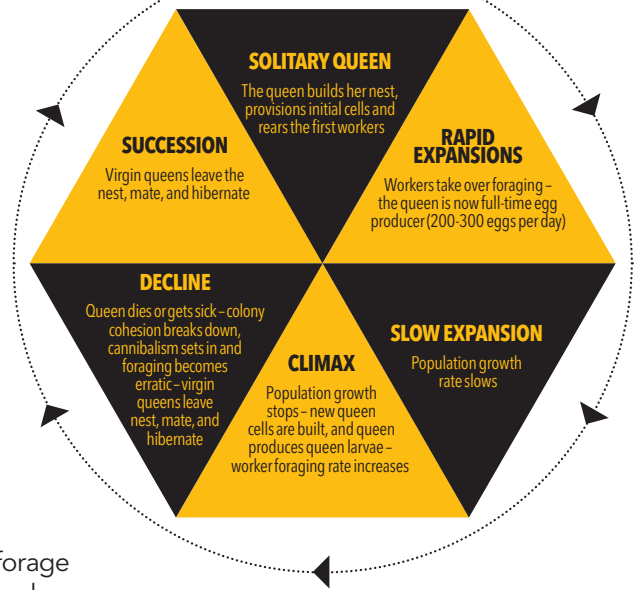
At their peak in August and September with the youngsters reared, the workers turn to the sweet food they prefer and become a nuisance.

Wasp or bee?

It's really easy for you to mistake **bees** for wasps. The way we treat bees and wasps are very different.

LIFE CYCLE OF QUEEN WASP

Each stage is 30-35 days



Bees are an important, beneficial species rarely considered a pest. Professional pest controllers only treat bees nests if it's a significant threat to public health as last resort.

Bees are hymenoptera, specialising in flowers, eating nectar for energy and pollen for protein.

Bees of all types are essential to our ecosystems, being the highest number of pollinating insect.

An estimated third of all crops are pollination-dependent, including those used in livestock feed, covering 70 different types of crop.

If you're unsure about whether you're looking at bees or wasps, **contact a professional pest controller** and they'll be able to help.

If possible and safe, take a photo to help with the identification.

BPCA is committed to protected bees, as is the **British Beekeepers Association**, **Bumblebee Conservation Trust** and the **Tree Bee Society**.

Worried about wasps? Pest advice for controlling Wasps



“To keep yourself and your family safe, we’d always recommend the use of a professional pest controller.”

Preventing wasps and their nests

Prevention is always better than cure. There’s things you can do to stop wasps invading your home or business.

Windows and doors

Simply keeping your home secure will stop wasps wandering into the house. Standard fly screens can help stop wasps getting in, while remaining cool in the hotter months.

Keep your bins shut

Open bins will attract greedy wasps looking for a cheap, sweet meal. Keep you bins away from the house and make sure the lid is on properly.

Check for nests early

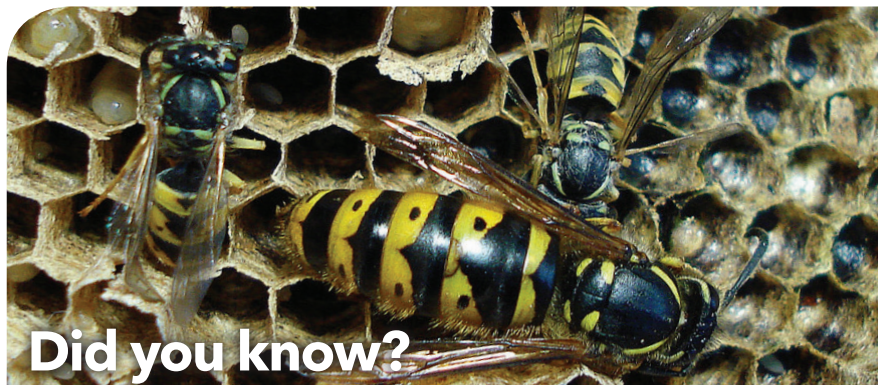
You can check all the most likely spots of wasps each Spring when the nests are tiny and easy to

deal with. They’ll be about the size of a golf ball. Check the loft, garage, shed and under eaves.

How to get rid of wasp nests

When wasps are causing a nuisance or endangering human health, we may have to destroy a wasps’ nest. Treating a wasp nest can be very dangerous. Wasps inside the nest will feel threatened and often become aggressive. This could cause them to sting you and others as they defend their nest resulting in multiple stings. **Unlike bees**, wasps do not die after one sting, they can, and will, sting you quite a few times!

Remember, not every wasps’ nest needs destroying - so if it’s well away from a building in a rarely used part of the garden, you might want to just leave it alone.



Did you know?

Wasps make up an enormously diverse array of insects, with some 30,000 identified species

Most wasps are solitary, non-stinging varieties

Wasps are on every continent except Antarctica

A social wasp in distress emits a pheromone that sends nearby colony members into a defensive, stinging frenzy

Only females have stingers as these are really modified egg-laying organs



Find a pest controller

Wasps have the potential to hurt you if their nest is disturbed. That’s why we can only recommend using a properly trained and qualified BPCA member company.

They have the expertise and equipment to do the job safely.

You can find a BPCA member, local to you, using our Find a pest controller tool.

bPCA.org.uk/find
01332 294 288

Wasps abandon their nests after the Summer and won’t return to it the following year.

Professional wasp control and what to expect

To get rid of wasps you don’t need to remove the nest, but you may need to treat it.

To keep yourself and your family safe, we’d always recommend the use of a **professional pest controller**.

A professional pest controller has the technical knowledge and access to a range of professional use insecticides which are not available to the public.

They’ll also have the appropriate protective equipment to avoid getting a nasty sting.

Image: Phil Bendle



4A Mallard Way, Pride Park, Derby, DE24 8GX
+44 (0)1332 294 288 @britpestcontrol

Worried about wasps? Pest advice for controlling Wasps



A pest controller will normally apply an insecticide near the entrance of the nest. The wasps then bring the chemical into the nest. After a couple of days the wasps will die from the dose of the pesticide.

Even if you think your wasps nest is at an inaccessible height, professional pest control companies will have the tools to reach and treat the nest in the safest possible way. You can ask your pest controller to come and remove the nest after a few days, but this will normally incur an extra charge.

Alternatively, you can wait until the autumn or winter when you are certain no live wasps remain and remove the nest yourself. If the nest has been treated with a

pesticide we suggest you wear protective clothing and gloves.

Getting rid of wasps yourself - DIY wasp control

Although an insect spray will quickly kill any wasps you hit in flight, the sheer number of wasps per-nest means this is probably a waste of time.

You'll see all sorts of DIY nest removal guides online. They're all very dangerous and not recommended by us.

When wasps feel threatened they release a chemical to call for help. While being stung by one wasp isn't normally dangerous, 30 or 40 stings could kill you.

DIY products can be effective for dealing with small nests in the early Spring, however they're unlikely to help with a large, established nest. Professional pest controllers have access to professional use products.

NEVER attempt to deal with a wasps' nest if you think you might be allergic to stings.

BPCA works hard to ensure the accuracy and current relevance of its publications. If you suspect something in this document is incorrect or out of date, please report it to technical@bpca.org.

Version 1: July 2019



BPCA

British Pest Control Association

MEMBER

BE PROTECTED. PROFESSIONALLY.

How do you know your pest management contractor is fit for the fight?

British Pest Control Association is the trade association for professional pest management companies in the UK.

By choosing an audited BPCA member you can be assured that the services you receive are from a trained and trusted company that meets our strict membership criteria.

Our member companies meet or exceed all legal and 'due diligence' requirements and comply with the most current legislation.

No other trade body gives you this security.

Make sure you stay safe.

Select a BPCA member.

Stay protected.
Always look for the logo.



01332 294 288



bpca.org.uk/find