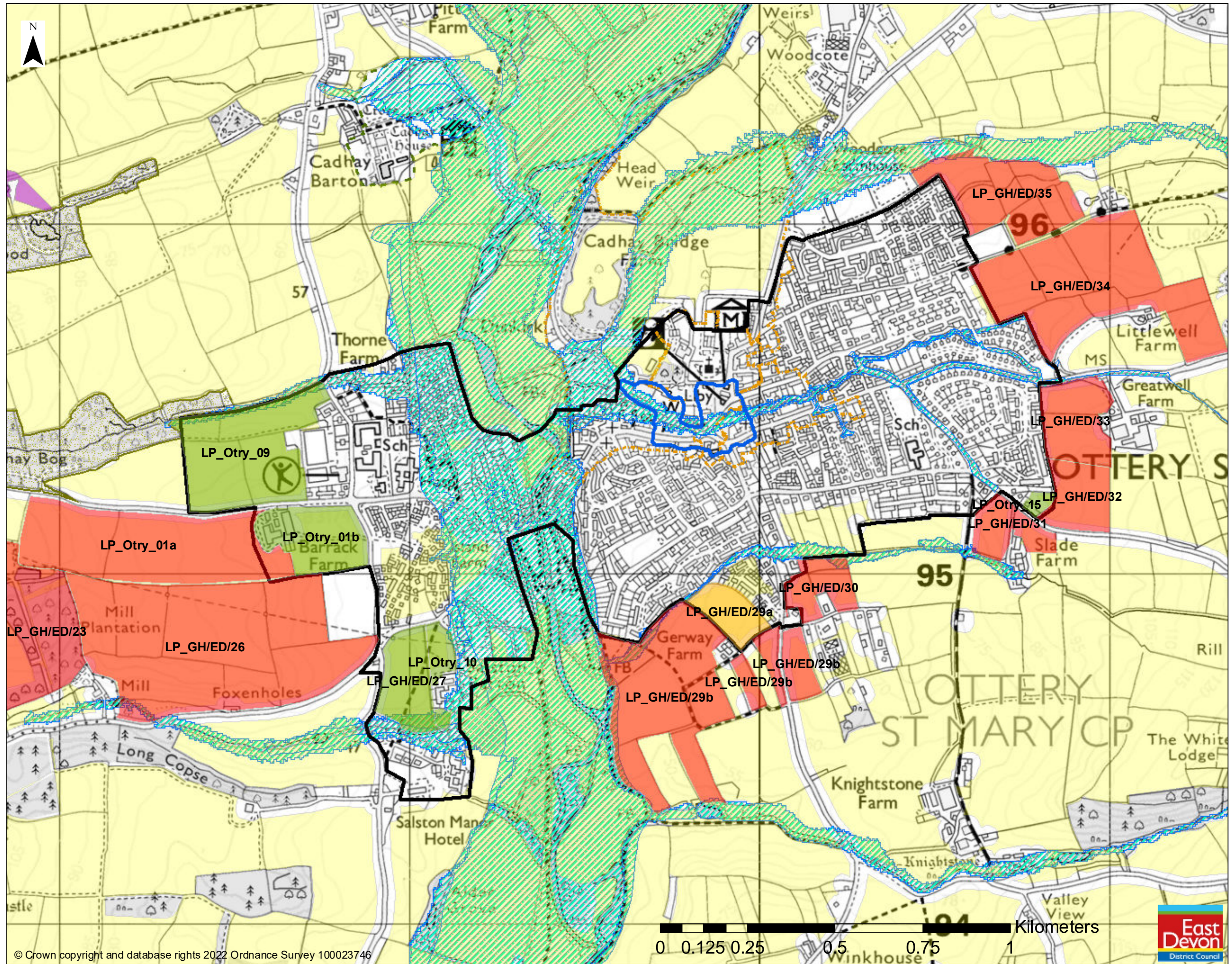


# East Devon Local Plan 2020-2040 - Ottery St Mary



**Legend**

**Housing and Mixed Use Allocations Preference**

- Preferred
- Second choice
- Rejected

**Other Designations**

- Settlement Boundaries
- Areas considered suitable for solar energy
- Areas considered suitable for wind energy
- Town Centre Areas
- Floodzone 2 - 0.1%
- Floodzone 3 - 1%
- Conservation Areas
- Historic Park or Garden
- County Wildlife Sites

© Crown copyright and database rights 2022 Ordnance Survey 100023746



n.b. Items in the Legend that appear in regular type are for consultation; items in italics are for information only