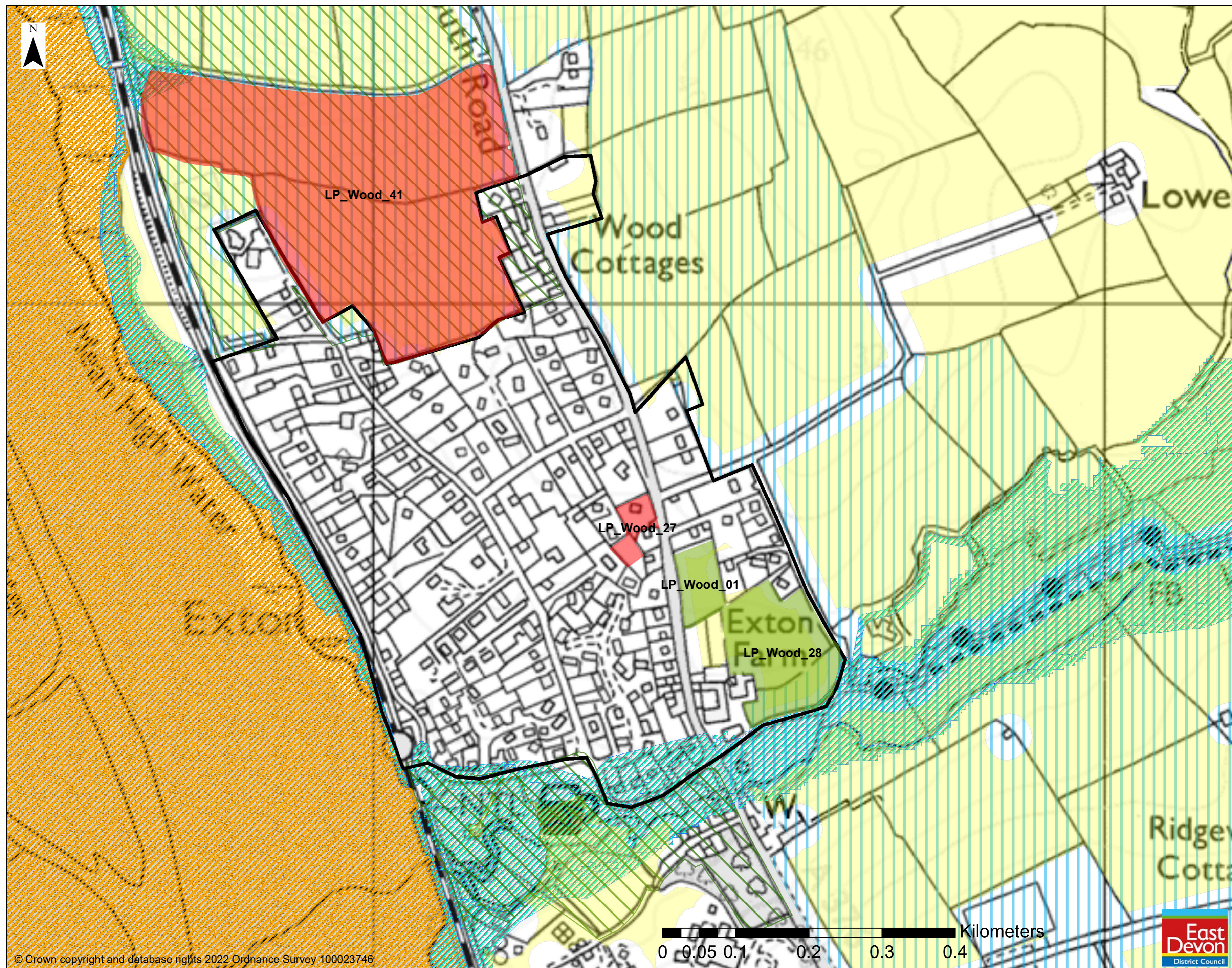


East Devon Local Plan 2020-2040 - Exton



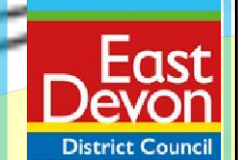
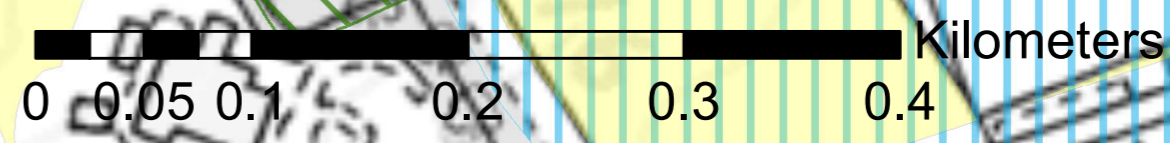
Legend

Housing and Mixed Use Allocations

Preference

- Preferred
- Rejected
- Settlement Boundaries
- Areas considered suitable for solar energy
- Coastal Preservation Areas
- Green Wedge
- Floodzone 2 - 0.1%
- Floodzone 3 - 1%
- Sites of Special Scientific Interest
- Special Protection Areas
- County Wildlife Sites
- Ramsar Sites

© Crown copyright and database rights 2022 Ordnance Survey 100023746



n.b. Items in the Legend that appear in regular type are for consultation; items in italics are for information only