

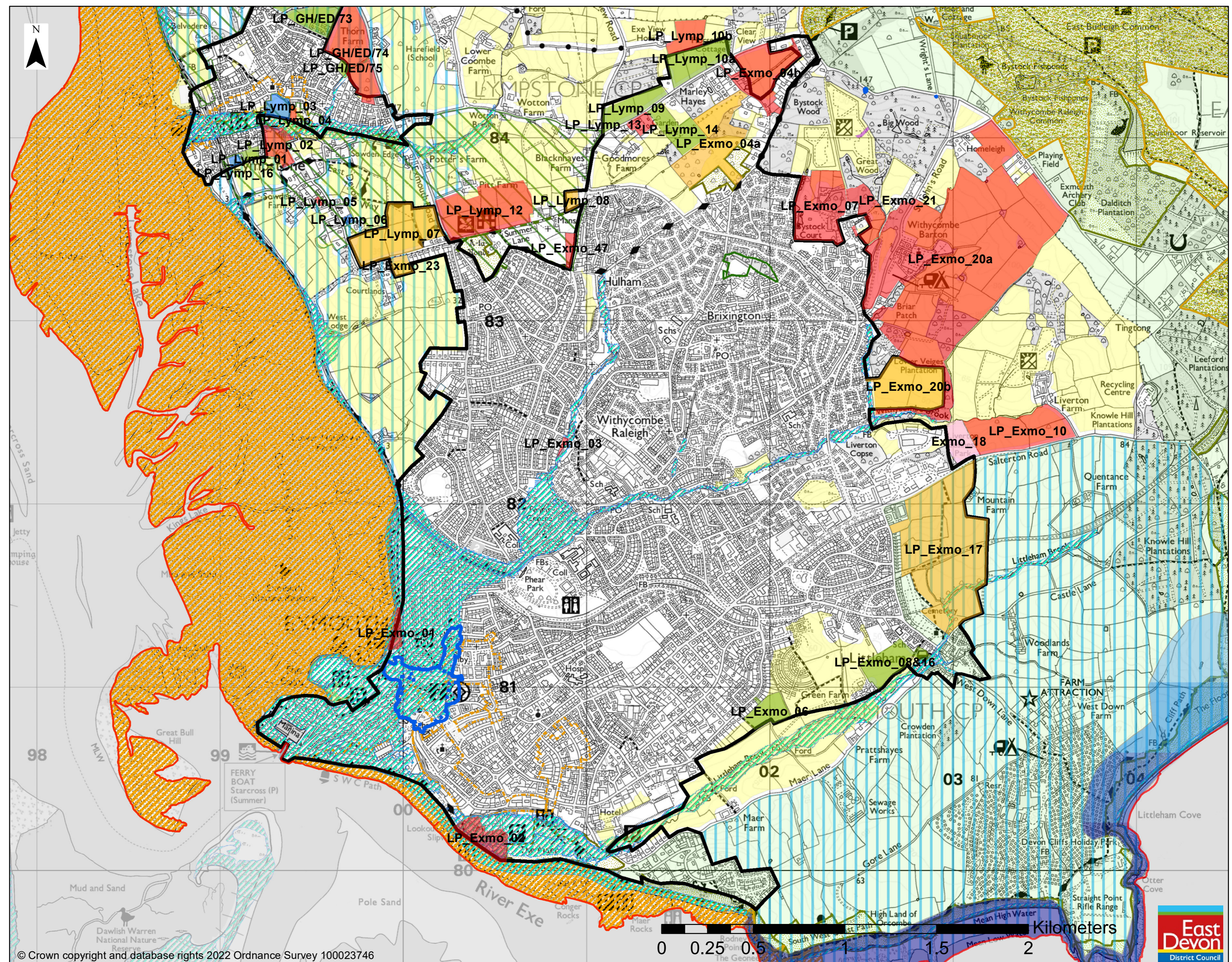
# East Devon Local Plan 2020-2040 - Exmouth

**Legend**

**Housing and Mixed Use Allocations**

**Preference**

- Preferred
- Second choice
- Rejected
- Planning permission granted
- Settlement Boundaries
- Employment Allocations
- Areas considered suitable for wind energy
- Areas considered suitable for solar energy
- Coastal Change Management Areas
- Town Centre Areas
- Primary Shopping Areas
- Coastal Preservation Areas
- Green Wedge
- Land of Local Amenity Importance
- Floodzone 2 - 0.1%
- Floodzone 3 - 1%
- AONBs
- Conservation Areas
- Scheduled Ancient Monument
- Historic Park or Garden
- Sites of Special Scientific Interest
- Special Areas of Conservation
- Special Protection Areas
- County Wildlife Sites
- Ramsar Sites
- Outside EDDC boundary



n.b. Items in the Legend that appear in regular type are for consultation; items in italics are for information only